

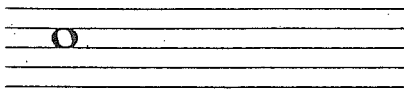
RHYTHM ANTICS

Time Signature

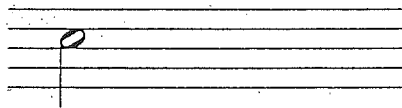
- $\frac{4}{4}$ = 4 counts in each measure
- $\frac{4}{4}$ = quarter note gets 1 count
- $\frac{4}{4}$ = **C** (common time)

Rest Type	whole rest	half rests	quarter rests
Counts	4	2 + 2	1 + 1 + 1 + 1
Note Type	whole note	half notes	quarter notes

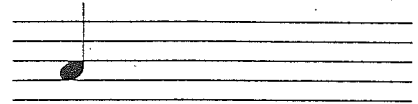
1. Draw four whole notes.



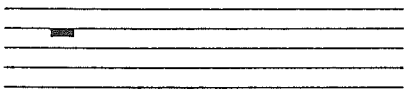
2. Draw four half notes.



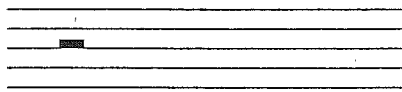
3. Draw four quarter notes.



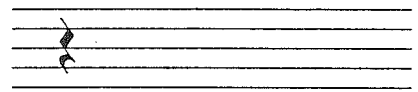
4. Draw four whole rests.



5. Draw four half rests.



6. Draw four quarter rests.



MUSIC MATH

Draw in a note or rest to complete each equation.

1. =
note

2. =
rest

3. =
note

4. =
rest

COMPOSER CALAMITY

Fill in the name of any composer you know and then help solve the problem.

_____ (name) needs ideas for a new piece. Using only half notes, quarter notes, half rests, and quarter rests, compose four rhythms _____ (name) can use. Make sure that each measure has four counts!

1. | 2. | 3. | 4. |